

# SUBIACO CHILDREN'S CENTRE

## Autumn Vacation Care Program

### Notes For Parents

OUR VACATION CARE PROGRAM RUNS FROM 7:30AM TO 6:00 PM. A LATE FEE OF \$30 EVERY 15 MINS WILL BE ENFORCED IF CHILDREN ARE PICKED UP AFTER 6:00PM.

WE ARE UNABLE TO CARE FOR CHILDREN THAT ARE UNWELL. MEDICATION WILL ONLY BE ADMINISTERED TO CHILDREN BY THE SCC'S QUALIFIED STAFF IF PROVIDED WITH WRITTEN AUTHORISATION.

PLEASE ENSURE CHILDREN BRING A REFILLABLE WATER BOTTLE, SUNSCREEN AND HAT EVERYDAY! (NO HAT NO OUTDOOR PLAY). SCC WILL PROVIDE SUNSCREEN TO BE REAPPLIED DURING THE DAY.

ENROLMENT FEES ARE PAID UP-FRONT AND ARE NON-REFUNDABLE. DAILY FEES (BEFORE CCS) PER CHILD \$72.00 PAID VIA DIRECT DEBIT.

IF YOUR CHILD IS LATE OR UNABLE TO ATTEND A DAY THEY ARE BOOKED IN PLEASE CONTACT STAFF ON: 0413 170 223 OR SUBICC@IINET.NET.AU

### Daily Requirements

HAT, SUNSCREEN, WATER BOTTLE AND ENCLOSED SHOES FOR EXCURSIONS.

### Terms

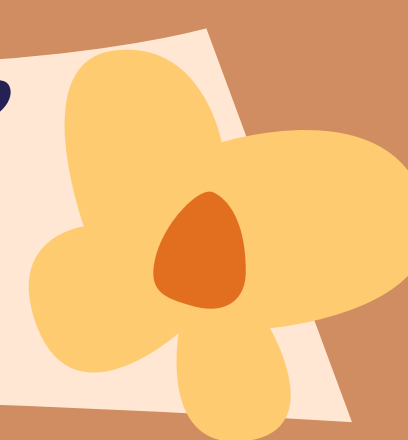
NO BOOKINGS WILL BE HELD. ENROLMENTS CAN ONLY BE TAKEN ON COMPLETION OF THE ENROLMENT FORM, BOOKING FORM AND DIRECT DEBIT AUTHORISATION.

UPON SUBMISSION OF ENROLMENT FORM AND CONFIRMATION OF PLACEMENT IN THE VACATION PROGRAM THE FEES DUE BECOME NON-REFUNDABLE.

PLEASE ENSURE THE REQUISITE FUNDS ARE AVAILABLE IN YOUR NOMINATED ACCOUNT BEFORE SUBMISSION OF ENROLMENT.

WE ASK THAT CHILDREN DO NOT BRING TOYS FROM HOME (SCC TAKES NO RESPONSIBILITY FOR LOST, DAMAGED OR STOLEN POSSESSIONS). AS SCC IS A NUT-FREE AREA WE ASK THAT PARENTS RESPECT THIS WHEN PACKING LUNCHES.

ALL EXCURSIONS AND INCURSIONS ARE SUBJECT TO CHANGE DUE TO WEATHER OR UNFORESEEN CIRCUMSTANCES.



## Autumn Vacation Program

OPEN 19TH DECEMBER TO 31ST JANUARY 2023 (CLOSED ON ALL PUBLIC HOLIDAYS).

OPERATING HOURS: 7:30AM TO 6:00PM

NUTRITIOUS MORNING TEA, AFTERNOON AND LATE AFTERNOON TEA PROVIDED. LUNCH PROVIDED ON IN-CENTRE AND INCURSION DAYS ONLY! (PLEASE REFER TO PROGRAM).



**Fri - 07/04**



**PUBLIC  
HOLIDAY**

**Mon - 10/04**

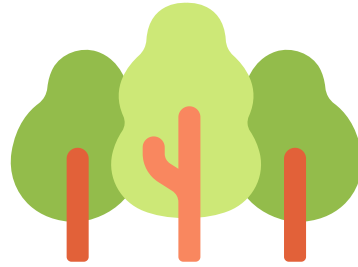


**PUBLIC  
HOLIDAY**

**Tue - 11/04**

**Excursion**  
Start: 9:15AM  
End: 2:00PM

Faulkner Park, 215 Wright St,  
Cloverdale, WA, 6105

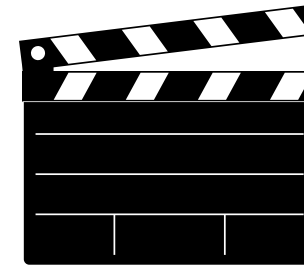


Today we are off to Faulkner  
Volcano Playground to play on  
the flying fox, trampolines and  
aerial rope walk!

**BRING LUNCH**

**Wed - 12/04**

**In-Centre**



Today we are bringing the  
movies to us with an In-Centre  
Movie Day! We will be making  
our own snacks and fun  
choosing some our favourite  
Disney movies.

**LUNCH PROVIDED**

**Thur - 13/04**

**Excursion**  
Start: 9AM  
End: 12AM

Bounce 1371 Albany Highway,  
Cannington WA 6107



Today we are heading south to  
Bounce in Cannington where  
one of their instructors  
will be teaching us how to do  
some pretty cool moves on their  
trampolines.

**BRING LUNCH**

**Fri - 14/04**

**Excursion**  
Start: 9:10AM  
End: 12AM

1 The Terrace, Fremantle,  
WA 6160



Today we are stepping inside and  
exploring Fremantle Prison from  
its convict origins in the 1850's  
until its closure as a maximum-  
security gaol in 1991 and discover  
how time was passed in the yards,  
while marvelling at original  
prisoner works of art.

**BRING LUNCH**

**Mon - 17/04**

**Incursion**  
Start: 10:00AM  
End: 12:30PM



The children will be engaged in  
learning the basics of archery  
target shooting, competitions  
several fun challenges and let's not  
forget the best part of archery it's  
just plain fun.

**LUNCH PROVIDED**

**Tue - 18/04**

**Excursion**  
Start: 9:00AM  
End: 12:00PM

Ellie Eaton Theatre, 1 Graylands  
Road, Claremont, WA, 6010



We are off to the theatre today to  
watch Show Day an energetic  
celebration of a community and  
the triumphs and challenges of  
their annual, much loved Ag Show.

**BRING LUNCH**

**Wed - 19/04**

**Excursion**  
Start: 9:00AM  
End: 12:00AM

Earthwise, 315-317 Bagot Road,  
Subiaco, WA 6008

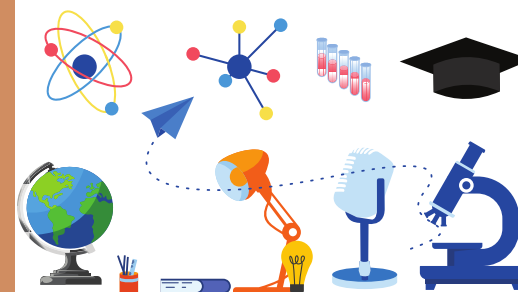


Today we are walking to the  
Earthwise, where we are  
participating a workshop about  
sustainability and rethink waste  
with so many 'lessens' (essence  
of less) to think about and try, .

**BRING LUNCH**

**Thur - 20/04**

**In-Centre**



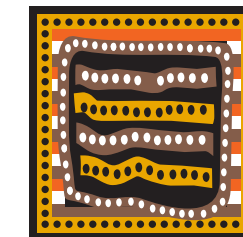
These days, STEM learning is  
more important than ever.  
Science, technology, engineering,  
and math are the keys to many  
modern careers. Today we are  
participating and creating motor  
inventions.

**LUNCH PROVIDED**

**Fri - 21/04**

**Excursion**  
Start: 9:00AM  
End: 12:30PM

Cnr Flynn and Selby St, Wembley  
WA 6018



Today we are off to Herdsman  
Lake to participate in Indigenous  
learning activities conducted on  
the banks of Noogenboro  
(Herdsman Lake), which was a  
traditional Nyungar camp  
ground.

**BRING LUNCH**

**Fri - 21/04**

**In-Centre**  
Start: 9:00AM  
End: 12:30PM



Today we are spending the school  
development day in our pajamas  
and making pizza. Let's relax  
with comfy clothes and good food  
on our last day before school.

**LUNCH PROVIDED**

# Excursion Information

## Faulkner Park

11/04



Faulkner Park, 215 Wright St, Cloverdale, WA, 6105  
Activities: Fenced Playground.  
Departing SCC: 9:15AM,  
Departing Faulkner Park: 1:15PM, returning approximately 2:00PM  
Ratio: Maximum 50 children with 6 educators attending the excursion (5 on floor at all times).

## Bounce

12/04



1371 Albany Highway, Cannington WA 6107  
Activities: Jumping on the trampoline at Bounce.  
Departing SCC: 9:00AM,  
Departing Cannington: 11:30AM, returning approximately 12:00PM  
Ratio: Maximum 50 children with 6 educators attending the excursion (5 on floor at all times).

## Fremantle Prison

14/04



1 The Terrace, Fremantle, WA 6160  
Activities: Interactive tour at Fremantle prison  
Departing SCC: 9:10AM,  
Departing Fremantle: 11:15AM, returning approximately 12:00PM  
Ratio: Maximum 50 children with 6 educators attending the excursion (5 on floor at all times).

## Theatre

18/04



Ellie Eaton Theatre, 1 Graylands Road, Claremont, WA, 6010  
Activities:  
Departing SCC: 9:10AM,  
Departing Claremont: 11:30PM, returning approximately 12:00PM  
Ratio: Maximum 50 children with 6 educators attending the excursion (5 on floor at all times).

## Earthwise

19/04



Earthwise, 315-317 Bagot Road, Subiaco, WA 6008  
Activities: Sustainability experience  
Departing SCC: 9:00AM,  
Departing Earthwise: 12:00PM, returning approximately 12:15PM  
Ratio: Maximum 50 children with 6 educators attending the excursion (5 on floor at all times).

## Herdsman Lake

21/04



Cnr Flynn and Selby St, Wembley WA 6018  
Activities: Indigenous Experience  
Departing SCC: 9:10AM,  
Departing Herdsman Lake: 12:45PM, returning approximately 1:1PM  
Ratio: Maximum 50 children with 7 educators attending the excursion (6 on floor at all times).

## How to Book

### 1.Link:

<https://forms.office.com/r/ATVgedJyqw>

### 2.QR Code:

Autumn VAC Booking Form - SCC

