

# SUBIACO CHILDRENS CENTRE

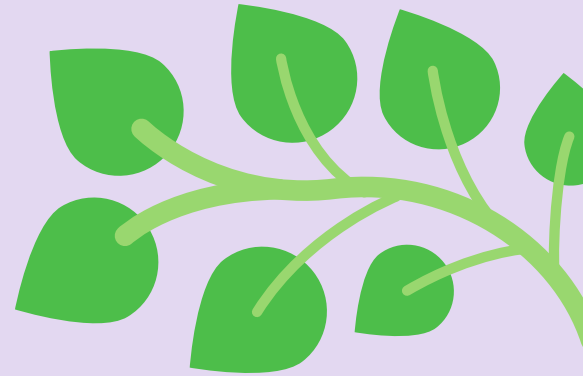
## SEPT/OCT VACATION PROGRAM

### Vacation Info

OPEN 27TH SEPTEMBER TO 12TH OCTOBER  
2021

OPEN HOURS: 7:30AM TO 6:00PM

NUTRITIOUS MORNING TEA, AFTERNOON AND  
LATE AFTERNOON TEA PROVIDED. \*LUNCH  
PROVIDED ON IN-CENTRE AND INCURSION  
DAYS ONLY! (PLEASE REFER TO PROGRAM)



### Terms

NO BOOKINGS WILL BE HELD. ENROLMENTS CAN ONLY BE  
TAKEN ON COMPLETION OF THE ENROLMENT FORM, BOOKING  
FORM AND DIRECT DEBIT AUTHORISATION.  
UPON SUBMISSION OF ENROLMENT FORM AND CONFIRMATION  
OF PLACEMENT IN THE VACATION PROGRAM THE FEES DUE  
BECOME NON-REFUNDABLE.

\*PLEASE ENSURE THE REQUISITE FUNDS ARE AVAILABLE IN  
YOUR NOMINATED ACCOUNT BEFORE SUBMISSION OF  
ENROLMENT.

ALL EXCURSIONS AND INCURSIONS ARE SUBJECT TO CHANGE  
DUE TO WEATHER OR UNFORESEEN CIRCUMSTANCES.

### Notes For Parents

OUR VACATION CARE PROGRAM RUNS FROM 7:30AM TO 6:00 PM. A LATE FEE  
OF \$30 EVERY 15 MINS WILL BE ENFORCED IF CHILDREN ARE PICKED UP  
AFTER 6:00PM.

WE ARE UNABLE TO CARE FOR CHILDREN THAT ARE UNWELL. MEDICATION  
WILL ONLY BE ADMINISTERED TO CHILDREN BY THE SCC'S QUALIFIED STAFF  
UNDER WRITTEN AUTHORISATION.

PLEASE ENSURE CHILDREN BRING A REFILLABLE WATER BOTTLE, SUNSCREEN  
AND HAT EVERYDAY! (NO HAT NO OUTDOOR PLAY). SCC WILL PROVIDE  
SUNSCREEN TO BE REAPPLIED DURING THE DAY.

BOOKING FEES ARE PAID UP-FRONT AND ARE NON-REFUNDABLE I.E. **NO  
CANCELLATIONS**. DAILY FEES (BEFORE CCS) PER CHILD \$72.00 PAID VIA  
DIRECT DEBIT.

IF YOUR CHILD IS LATE OR UNABLE TO ATTEND A DAY THEY ARE BOOKED IN  
PLEASE CONTACT STAFF ON: **0413 170 223 OR SUBICC@IINET.NET.AU** OR  
NOTIFY US THROUGH THE XPLOR HOME APP.

### Daily Requirements!

**HAT, JUMPER, WATER BOTTLE AND ENCLOSED SHOES  
FOR EXCURSIONS.**

**MONDAY 27/09**



**PUBLIC HOLIDAY**

**OPTICAL ILLUSION SAND ART  
IN-CENTRE:**

To start the holiday's off we are getting creative making optical illusions out of sand art to trick the common eye.

**STARTS: 10am  
ENDS: 12pm**

**QUEEN'S BIRTHDAY CLOSED!**

**TUESDAY 28/09**



**LUNCH PROVIDED**

**STARTS: 9.15am  
ENDS: 1pm**

**WEDNESDAY 29/09**

**FULL**

**BRING LUNCH**

**BOSS BABY 2 MOVIE  
EXCURSION:**

Come with us as we are off to watch the sequel to the Boss Baby comedy about a baby secret agent and a new boss baby with a cutting-edge approach serve to bring together two estranged brothers and inspire a new family business.

639 Beach Road, Warwick Western Australia 6024

**INFLATABLE WORLD  
EXCURSION:**

We are headed to inflatable world a massive inflatable indoor playground where children can play participate in activities like devils drop, slam dunking, velcro wall, sliding and battling in the gladiator arena. NO SOCKS - NO PLAY.

4 Elcar Lane, Joondalup Western Australia 6027

**BUS DEPARTS: 9:15am  
BUS RETURNS: 12:30pm**

**THURSDAY 30/09**

**FULL**

**BRING LUNCH**

**STARTS: 10am  
ENDS: 12pm**

**FRIDAY 01/10**



**LUNCH PROVIDED**

**TRIVIA/GAME SHOW  
INCURSION:**

Today Bob 'Till You Drop is here to run a trivia game show with us complete with a spinning wheel, buzzers and minute to win it challenges! We will be putting out skills and knowledge to the test today in our very own Subiaco Children's game show.



**MONDAY 04/10**



**LUNCH PROVIDED**

## MAD HATTERS TEA PARTY IN-CENTRE:

Don't be late for this very important date! We are having a mad hatters tea party, baking treats and playing croquet and other fun new lawn games. We will also be making some Alice in Wonderland themed crafts.

**STARTS: 10am  
ENDS: 2pm**

## SCITECH EXCURSION:

We are off to Scitech today to watch the stars in their planetarium and explore all the weird and wonderful sides of science.

City West centre, Corner Railway Street & Sutherland Street, Perth WA 6005

**BUS DEPARTS: 9:25am  
BUS RETURNS: 12:30pm**

**TUESDAY 05/10**

**FULL**

**BRING LUNCH**

**WEDNESDAY 06/10**



**FULL**

**BRING LUNCH**

## BIBRA LAKE PLAYGROUND:

The Bibra Lake regional playground has something for everyone, from a double flying fox to water squirting bulrushes and giant talking rocks telling local Nyungar stories.

Progress Drive, just south of Hope Road, Bibra Lake WA 6163

**STARTS: 9.15am  
ENDS: 1pm**

## DINO WORLD INCURSION:

Travel back to a prehistoric error and learn all about dinosaurs as you see real and replica fossils along with posters, pictures and life size elements of dinosaurs, if you are lucky a life size T-rex might even drop by!

**STARTS: 10am  
ENDS: 12pm**

**THURSDAY 07/10**

**FULL**

**LUNCH PROVIDED**

**FRIDAY 08/10**

**FULL**

**BRING LUNCH**

## MORLEY ROLLERDROME EXCURSION:

Today we are rolling un over to Morley Rollerdrome to show of our roller-skating skills retro style!

95 Catherine Street, Morley Western Australia 6062

**BUS DEPARTS: 9:15am  
BUS RETURNS: 1pm**

## MAKING MONSTERS IN-CENTRE

Today is the last day of holidays and we are staying at the centre to model our own crazy monsters out of air dry clay and then painting them to bring them to life.

**STARTS: 10am  
ENDS: 2pm**

**MONDAY 11/10**

**FULL**

**LUNCH PROVIDED**