

# SUBIACO CHILDRENS CENTRE

CHRISTMAS AND SUMMER HOLIDAY PROGRAM



## Notes For Parents

OUR VACATION CARE PROGRAM RUNS FROM 7:30AM TO 6:00 PM. A LATE FEE OF \$30 EVERY 15 MINS WILL BE ENFORCED IF CHILDREN ARE PICKED UP AFTER 6:00PM. WE ARE UNABLE TO CARE FOR CHILDREN THAT ARE UNWELL. MEDICATION WILL ONLY BE ADMINISTERED TO CHILDREN BY THE SCC'S QUALIFIED STAFF UNDER WRITTEN AUTHORISATION.

PLEASE ENSURE CHILDREN BRING A REFILLABLE WATER BOTTLE, SUNSCREEN AND HAT EVERYDAY! (NO HAT NO OUTDOOR PLAY). SCC WILL PROVIDE SUNSCREEN TO BE REAPPLIED DURING THE DAY.

BOOKING FEES ARE PAID UP-FRONT AND ARE NON-REFUNDABLE. DAILY FEES (BEFORE CCS) PER CHILD \$72.00 PAID VIA DIRECT DEBIT.

IF YOUR CHILD IS LATE OR UNABLE TO ATTEND A DAY THEY ARE BOOKED IN PLEASE CONTACT STAFF ON: **0413 170 223** OR **SUBICC@INET.NET.AU**

## Summer Vacation Program

OPEN 18TH DECEMBER TO 29TH JANUARY 2021 (CLOSED 24 DECEMBER TO 4TH JANUARY 2021 AND ALL PUBLIC HOLIDAYS)

OPEN HOURS: 7:30AM TO 6:00PM

NUTRITIOUS MORNING TEA, AFTERNOON AND LATE AFTERNOON TEA PROVIDED. \*LUNCH PROVIDED ON IN-CENTRE AND INCURSION DAYS ONLY! (PLEASE REFER TO PROGRAM)

## Daily Requirements

HAT, SUNSCREEN, BATHERS, TOWEL, WATER BOTTLE AND ENCLOSED SHOES FOR EXCURSIONS.

## Terms

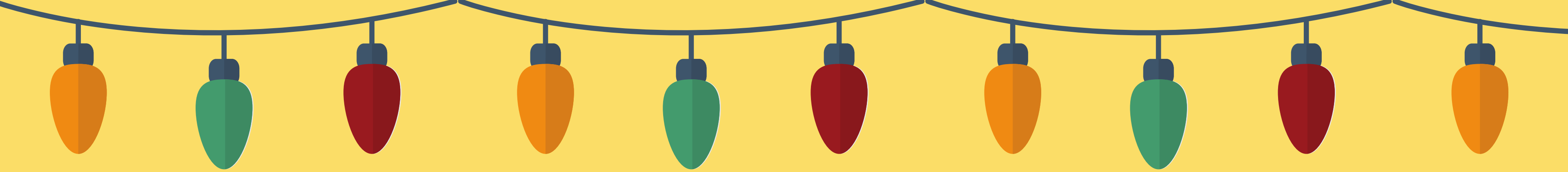
NO BOOKINGS WILL BE HELD. ENROLMENTS CAN ONLY BE TAKEN ON COMPLETION OF THE ENROLMENT FORM, BOOKING FORM AND DIRECT DEBIT AUTHORISATION.

UPON SUBMISSION OF ENROLMENT FORM AND CONFIRMATION OF PLACEMENT IN THE VACATION PROGRAM THE FEES DUE BECOME NON-REFUNDABLE.

\*PLEASE ENSURE THE REQUISITE FUNDS ARE AVAILABLE IN YOUR NOMINATED ACCOUNT BEFORE SUBMISSION OF ENROLMENT.

ALL EXCURSIONS AND INCURSIONS ARE SUBJECT TO CHANGE DUE TO WEATHER OR UNFORESEEN CIRCUMSTANCES.





**FRI 18/12**

**Incursion**

10AM - 12PM



Today the RAC is here to teach us all about road safety and risky behaviours around the road.

**LUNCH PROVIDED**

**MON 21/12**

**In-Centre**

10AM - 3PM



We are learning how to make our own mosaics today. We will be getting creative making our own designs.

**LUNCH PROVIDED**

**TUE 22/12**

**In-Centre**

10AM - 2PM



Today is all about getting crafty as we make Christmas ornaments and the kids also get the chance to make a beanie or their own kite.

**LUNCH PROVIDED**

**WED 23/12**

**In-Centre**

10AM - 2PM



We are getting busy today as we set up and decorate our own gingerbread houses just in time for the holidays.

**LUNCH PROVIDED**

**Closed  
24/12  
to  
04/01**

**HAPPY HOLIDAYS!**



**MON 4/1**

**In-Centre**

10AM - 1PM



Today we are busy in the kitchen as we make our own chicken, tuna or vegetarian sushi for lunch.

**LUNCH PROVIDED**

**TUE 5/1**

**Incursion**

10AM - 12PM



Today Kidz 'n sport is here to run us through a few sports programs and help us develop our skills.

**LUNCH PROVIDED**

**WED 6/1**

**Excursion**

Bus Departs: 9:20AM

Bus Returns: 1PM

639 Beach Road, Warwick Western Australia 6024



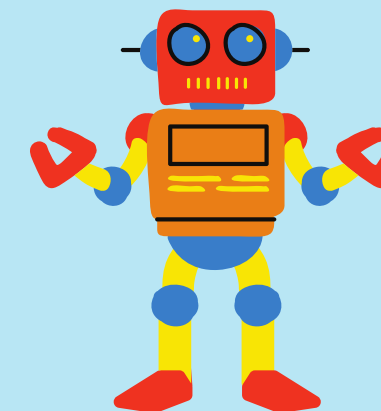
We are off to the Movies today to see Beatrix Potters Peter Rabbit 2. Popcorn and drink provided

**BRING LUNCH**

**THURS 7/1**

**Incursion**

10AM - 12PM



Discover how robots work today as we learn how they are built and controlled during a workshop from Edgy X.

**LUNCH PROVIDED**

**FRI 8/1**

**Excursion**

Bus Departs: 9:10AM

Bus Returns: 2PM

1635 Neaves Road, Bullsbrook Western Australia 6084



We are off to Outback splash to challenge ourselves on their outdoor mazes, giant chess and mini golf

**BRING LUNCH**

**MON 11/1**

**Excursion**

Bus Departs: 9:15AM

Bus Returns: 1:30PM

Lot 103 Nettleton Road, Byford Western Australia 6122



We are headed to Cohuna Koala Park today to hang with some Koala's, feed Aussie animals and even ride a train!

**BRING LUNCH**

**TUE 12/1**

**Incursion**

10AM - 1PM



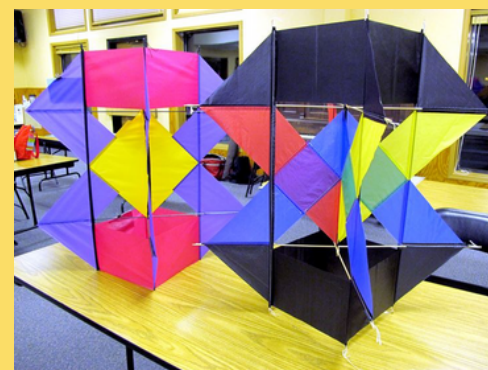
Jason from Kaboom Toons is here to teach us all about the art of drawing Caricatures as we learn how to draw our very own.

**LUNCH PROVIDED**

**WED 13/1**

**Incursion**

10AM - 1PM



Michael from Kite Kinetics is going to teach us how to make a Japanese box kite today!

**LUNCH PROVIDED**

**THURS 14/1**

**Excursion**

Bus Departs: 9:15AM

Bus Returns: 1:30PM

91 Southside Drive, Hillarys Western Australia 6025



We are off to AQA today to explore all that lives under the ocean. Afterwards we will eat ourpacked lunch at the marina.

**BRING LUNCH**

**FRI 15/1**

**In-Centre**

10AM - 1PM



Today SCC is putting on a carnival as we have face painting, a bouncy castle, learn how to perform circus tricks and play some carnival games.

**LUNCH PROVIDED**





# MON 18/1

## Excursion

Bus Departs: 9:20AM

Bus Returns: 1PM

Eleventh Road, Hilbert, Western Australia



Today we are setting sail for Shipwreck Park Sienna Wood to play on the pirate themed playground, flying fox and sports area.

### BRING LUNCH

# TUE 19/1

## Incursion

9:30AM - 11AM



Today Tucker Bush and Bindi Bindi Dreaming are in to teach us about native Australian plants and help us set up our own bush tucker garden in SCC with edible plants!

### LUNCH PROVIDED

# WED 20/1

## Incursion

10AM - 12PM



Today is all about experimenting as we make rockets, snow, slime, bubbles, vortex cannons and Elephants toothpaste with Supersonic Science.

### LUNCH PROVIDED

# THURS 21/1

## Incursion

9AM - 1PM



Educated by Nature is here to give us the chance to learn how to use hammers, drills and other tools as we getting busy building things today.

### LUNCH PROVIDED

# FRI 22/1

## Excursion

Bus Departs: 9:20AM

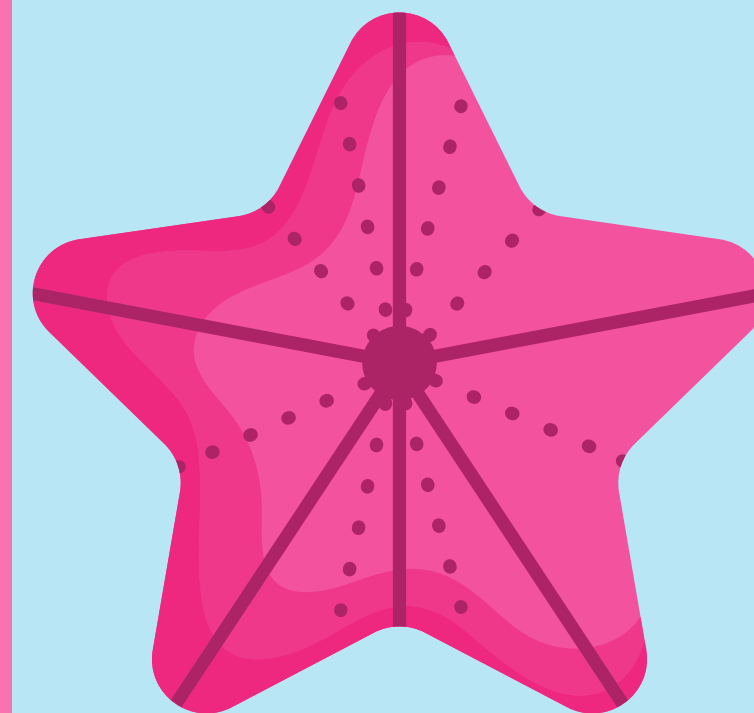
Bus Returns: 2PM

333 Victoria Park Drive, Burswood Western Australia 6100



Optus Stadium awaits us today as we head off to have a play on the playground next to the stadium, followed by a stadium tour.

### BRING LUNCH



# MON 25/1

## Excursion

Bus Departs: 9:30AM

Bus Returns: 1:30PM

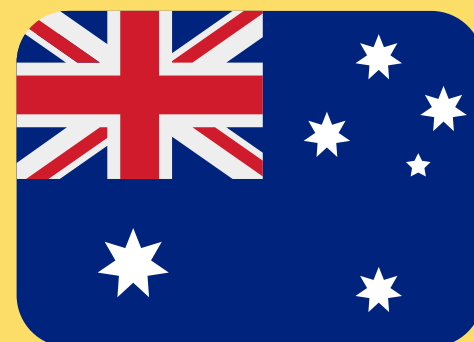
Jo Wheatley All Abilities Play Space Esplanade, Dalkieth WA 6009



We are off to Jo Wheatley playground to test out their flying fox, climbing obstacles, slides, swings and sensory garden

### BRING LUNCH

# TUE 26/1



## AUS DAY CLOSED

# WED 27/1

## Incursion

10AM-1PM



Today Wonderful Worm Waste is here to teach us all about the cool things about worms and help us make our own worm farm! Please BRING AN OLD PLASTIC BOTTLE for your worm farm!

### LUNCH PROVIDED

# THURS 28/1

## Excursion

Bus Departs: 9:20AM

Bus Returns: 1PM

Bell Tower, Barrack Sq, Perth WA 6000



Today we are off to Elizabeth Quay for a tour of Perth's famous Bell Tower.

### BRING LUNCH

# FRI 29/1

## Incursion

10AM-1PM



Today with help from Edgy X we are designing and building our own Billy Carts in teams before we race off against each other!

### LUNCH PROVIDED

